



Res-proték **8106**

## Multi Gases and Vapours Twin Filter A1B1E1K1

### Protection Against Multi Gases & Vapours:

Udyogi | Res-proték 8106 filter is a A1B1E1K1 type filter to provide comprehensive protection against a wide range of contaminants commonly encountered in industrial environments, including certain Ammonia, Chlorine, Chlorine Dioxide, Formaldehyde, Hydrogen Chloride, Hydrogen Fluoride, Hydrogen Sulfide, Methylamine, Organic Vapour compounds with a boiling point > 65 °C, and sulfur dioxide.

These filters offer versatile respiratory protection, suitable for various industries and applications where workers may be exposed to multiple hazardous substances simultaneously.

- Swept-back design allows an enhanced field of view and comfort.
- A wide range of applications reduces inventory needs.
- Simple and quick installation and usage requirements reduce training requirements.

### Capacity:

A1B1E1K1-type filter have a maximum amount of contaminants that can be adsorbed by the filter before replacement is required, which varies depending on factors such as contaminant concentration, filter media, and environmental conditions.

The capacity of the filter depends on factors such as the concentration of contaminants in the air and the duration of exposure.

### Protection Classification:

- A1: Protection against certain organic gases and vapors with a boiling point above 65°C.
- B1: Protection against specific inorganic gases and vapors, such as hydrogen sulfide (H<sub>2</sub>S).
- E1: Protection against specific inorganic gases and vapors, particularly sulfur dioxide (SO<sub>2</sub>) and other acidic gases.
- K1: Protection against ammonia (NH<sub>3</sub>), a common industrial chemical.

### Compatibility:

8106 filters are compatible with various types of Res-proték respiratory protective devices, including the Res-Proték 8200, 9000 half-face mask, and 8800 full-face mask.

### Compliance:

Complies with European standard EN 14387:2004+A1:2008

### Connection Type:

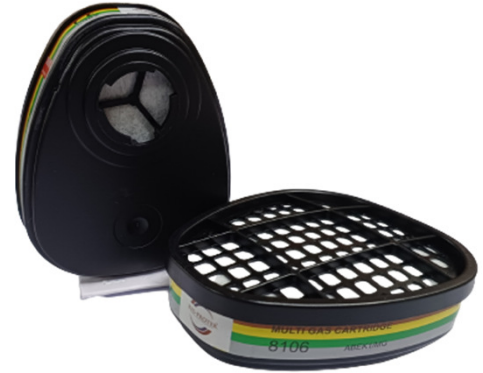
Bayonet Connection

### Secure Attachment:

Bayonet connection filters feature a secure and robust attachment mechanism. The bayonet connection ensures a tight seal between the filter and the respirator, minimizing the risk of leakage or dislodgment during use.

### Quick and Easy Replacement:

Filters with bayonet connections can be swiftly replaced when needed. The bayonet mechanism allows for effortless attachment and removal, reducing downtime and ensuring uninterrupted workflow.



### Filter Classification:

- Filter Type – A B E K (MG)
- Filter Class – 1
- PPM – up to 1000 ppm
- Colour Code – Brown, Yellow, Grey & Green

### Udyogi



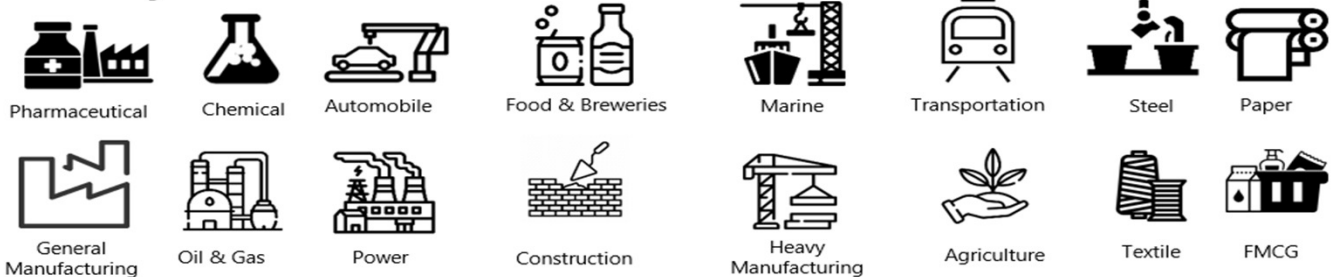
## Multi Gases and Vapours Twin Filter A1B1E1K1

### Application:

- Pharmaceutical Processing,
- Chemical Processing/Handling/Clean-up
- General Maintenance, Cleaning, Renovation
- General Industrial Operations
- Pesticides, Agrochemicals Handling
- Sealants Processing/ Handling
- Assembly
- Cleaning and Degreasing
- Oil Processing/ Handling
- Laboratories
- Machining
- Painting
- Paint Preparation
- Cosmetic Formulations
- Adhesives Processing/ Handling
- Food Proceeding

**Protection against Particulate Hazards: Use the 8106 filter + 811 prefilter + 810 retainer or 8106PR with Res-protek face masks.**

### Industry:



### Storage:

Filters are supplied in hermetic packaging. Without taking the filter out of its original packaging,

Keep it in a fresh and dry environment away from atmospheric contaminants.

Avoid high levels of humidity, hopefully not over 80% relative humidity.

Do not expose the filter to heat. direct sunlight.

Do not expose the respirator to heat over 50 °C or direct sunlight.

**Storage under conditions other than those specified by the manufacturer may affect the shelf life.**

### Packing:

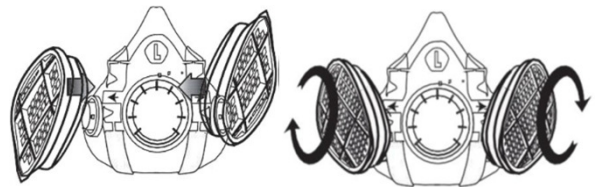
1 pair packed in a foil pouch.  
30 pairs in one carton box.

### Assembling Instructions filter with Face Mask:

Match the filter plastic connection with the filter holder on the respirator.

Press and turn the filter all the way clockwise.

Repeat for second filter



The above mentioned filters when used with half masks, full masks, the negative pressure fit check is necessary before entrance into contaminated area, please see information on half mask, full mask user instruction.



### Warning:

These filters do not supply oxygen. Do not use in atmospheres containing less than 19.5% oxygen. Caution must be given in oxygen-enriched atmospheres (ignition), and it is prohibited to enter explosive atmospheres (e.g., through solvents). Filters should not be used in firefighting or to work with open flames or molten metal since.

Before use, the wearer must read and understand the User Instructions provided as a part of the product packaging.